

Fairmont
GOLDEN PRAGUE

A SOPHISTICATED PLAYGROUND
FOR EPICUREAN CITY LIVING,
HOLISTIC WELLNESS AND
LEGENDARY EVENTS
OPENING MARCH 2025

Forbes
TRAVEL GUIDE
GLOBAL PARTNER



LOCATION

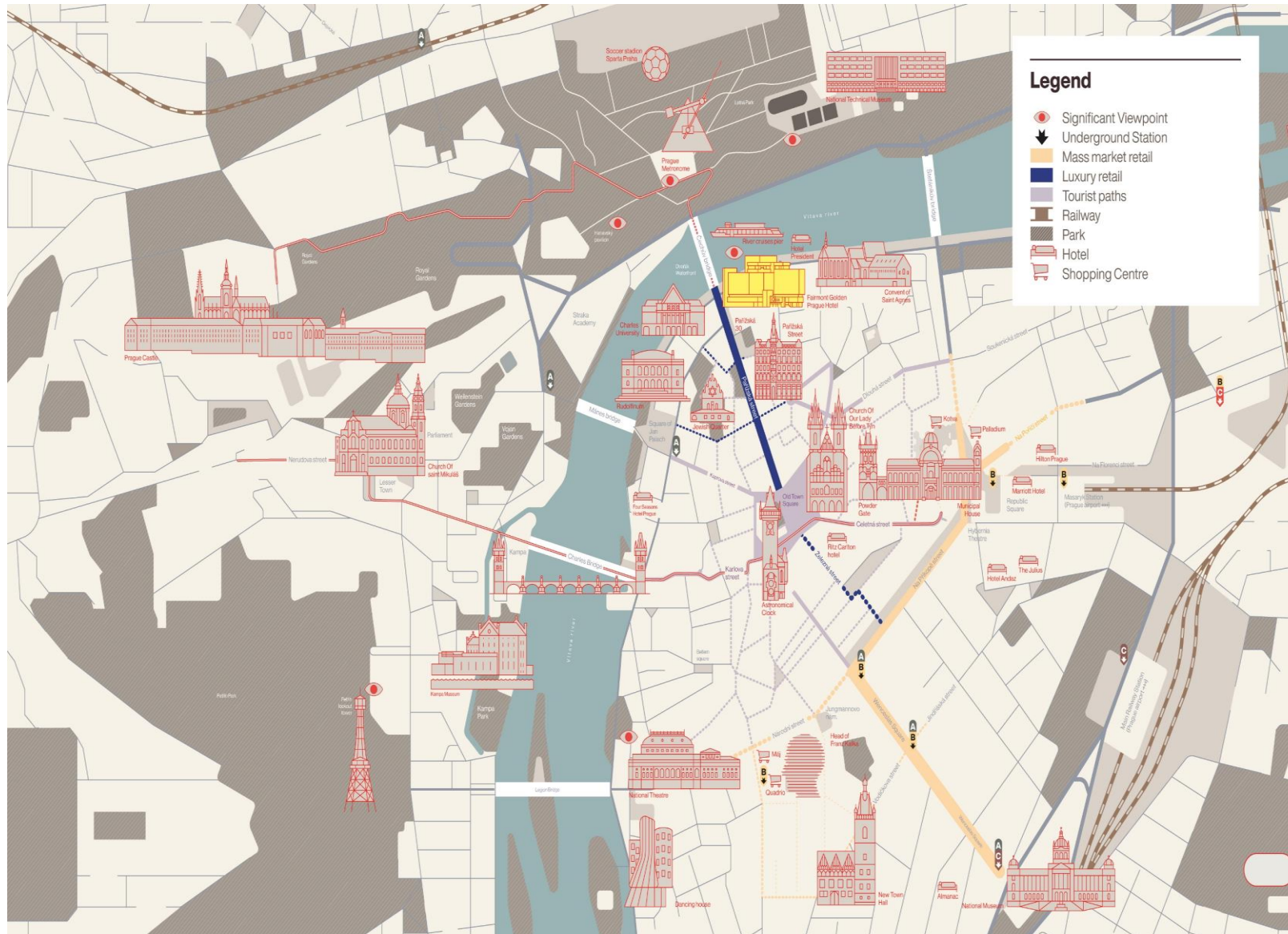


DIRECT FLIGHTS TO PRAGUE

- ✓ NEW YORK (JFK) TO PRAGUE (PRG) 8H 30 MIN
7 FLIGHTS PER WEEK MAY – OCTOBER
- ✓ TORONTO (YYZ) TO PRAGUE (PRG) 9H
3 FLIGHTS PER WEEK – SUMMER 2025
- ✓ AMSTERDAM (AMS) TO PRAGUE (PRG) 1H 30 MIN
6 – 8 FLIGHTS PER DAY
- ✓ PARIS (CDG) TO PRAGUE (PRG) 1H 40MIN
5 FLIGHTS PER DAY
- ✓ LONDON (LHR) TO PRAGUE (PRG) 2H
4 -5 FLIGHTS PER DAY
- ✓ FRANKFURT (FRA) TO PRAGUE (PRG) 1H
4 – 5 FLIGHTS PER DAY
- ✓ ABU DHABI (AUH) TO PRAGUE (PRG) 5H 45 MIN
4 FLIGHTS PER WEEK - JUNE 2025



HOTEL LOCATION



2-5 minutes walking distance
Parizska Street (shopping)
Jewish Quarter
River cruises
Old Town Square

10 minutes walking distance
Charles Bridge
Wenceslav Square

20 minutes walking distance
Prague Castle
National Theatre

25 minutes drive
Prague Vaclav Havel Airport

ACCOMMODATION

297 ROOMS AND SUITES, 23 RESIDENCES

- **FAIRMONT ROOMS** (24 -27 SQM / 258 – 290 SQFT)
107 UNITS INCLUDING 24 RIVER VIEW
- **DELUXE ROOMS** (34 -36 SQM / 365 – 387 SQT)
40 UNITS INCLUDING 5 RIVER VIEW
- **SIGNATURE ROOMS** (38 SQM -48 SQM / 409 – 516 SQFT)
102 UNITS INCLUDING 24 RIVER VIEW
- **SUITES** (57 – 85 SQM / 613 – 914 SQFT)
39 ONE BEDROOM SUITES
8 SIGNATURE SUITES INCLUDING 12 RIVER VIEW
- **PRESIDENTIAL SUITE** (150 SQM / 1614 SQFT)



FAIRMONT ROOM

ACCOMMODATION

FAIRMONT GOLD LOUNGE EXPERIENCE

- ✓ Private floor with its own reception desk for check-in
- ✓ Private lounge exclusively for Fairmont gold guests
- ✓ Healthy & complimentary continental breakfast in lounge
- ✓ Complimentary afternoon canapés served in lounge & honor bar
- ✓ Complimentary use of a boardroom
- ✓ High-speed internet access in the gold lounge
- ✓ In-room high-speed internet access
- ✓ Complimentary newspapers and personalized wake-up calls
- ✓ Dvds, cds, books and games for your use
- ✓ Dedicated Fairmont gold manager

FAIRMONT PRAGUE RESIDENCES

The 23 serviced residences directly connected with the hotel with private kitchenette, living room and bedroom include:

- ✓ 13 FAIRMONT STUDIOS
- ✓ 7 ONE-BEDROOM RESIDENCES
- ✓ 1 LOFT RESIDENCE
- ✓ 1 EXECUTIVE RESIDENCE
- ✓ 1 GRAND TWO-BEDROOM RESIDENCE





ONE BEDROOM SUITE



PRESIDENTIAL SUITE



Fairmont
HOTELS & RESORTS

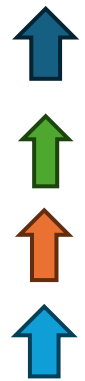
ONE-BEDROOM RESIDENCE

MEETING & EVENTS

- ✓ TOTAL MEETING SPACE CAPACITY 1.213 SQM = 13.058 SQFT
- ✓ ICONIC BALLROOM (573 M2/6 168 SQ FT) UP TO 600 GUESTS WITH A SEPARATE ENTRANCE
- ✓ THREE EXCLUSIVE C SUITE BOARDROOMS FOR 8 -12 GUESTS
- ✓ BREATHTAKING INDOOR VENUES AND MEETING OPTIONS
- ✓ COMPLIMENTARY HIGH-SPEED INTERNET IN ALL GUEST ROOMS, RESTAURANT, MEETING ROOMS AND THE PUBLIC AREAS



BALLROOM FOYER



Main entrance

Secondary entrance

Foyer entrance

Ballroom entrance

LOBBY LEVEL FLOORPLAN

Kafka Brasserie

Greenhouse +
Terrace

Greenhouse
private dining

Coocoo's
Nest

Grand
Ballroom

VIP
Room

Crystal Bar Ballroom Foyer



CAPACITY CHART

Venue Name	Size in SQM	Size in SQ FT	Classroom Set Up	Theatre Set Up	Rounds Set Up	U-shape Set Up	Cabaret Set Up	Hollow Square Set Up	Reception Set Up	Board Table Set Up	Private Dining Set Up
Grand Ballroom	573	6,168	400*	550*	400*	87	350*	120	600*	X	X
Grand Ballroom I	300	3,229	234*	350*	200*	70	200*	86	300*	X	X
Grand Ballroom II	150	1,615	72*	150*	60*	57	66*	60	150*	X	X
Crystal Bar Grand Ballroom Foyer	400	4,306	X	X	X	X	X		250	X	X
VIP room	26	280	X	X	X	X	X		X	X	X
C-Suite I	42	452	X	X	X	X	X		X	8**	8***
C-Suite II	34	366	X	X	X	X	X		X	8**	8***
C-Suite III	48	517	X	X	X	X	X		X	12**	12***
C-Suite Lounge	90	969	X	X	X	X	X		X	X	X

* Kindly note that the numbers stated in the above overview do not include a stage.

** Please note that we are unable to accommodate a stage in any of our C-Suites.

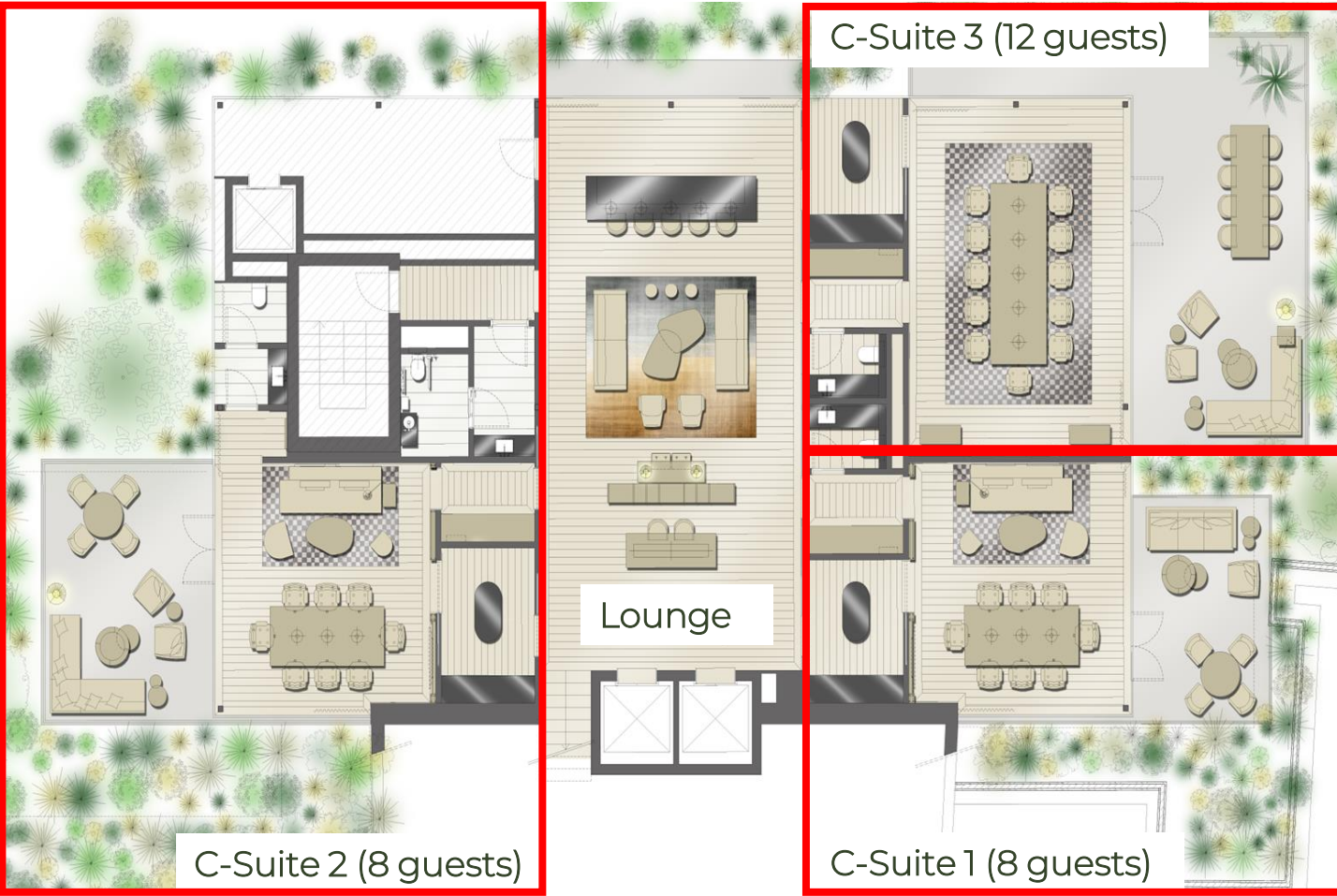
*** In the event of a private dinner or lunch served in any of the C-Suites, the existing boardroom table will be utilized.





GRAND BALLROOM

FLOORPLAN C-SUITE BOARDROOMS



DINING

- ✓ KAFKA BRASSERIE - 190 SEATS
- ✓ GREEN HOUSE - 130 INDOOR SEATS AND 58 TERRACE SEATS
- ✓ ZLATA PRAHA - 70 SEATS AND OUTDOOR TERRACE WITH 64 SEATS
- ✓ GOLDEN EYE - 97 SEATS
- ✓ COOCOO'S NEST – 60 SEATS
- ✓ TILIA CAFE– 45 SEATS





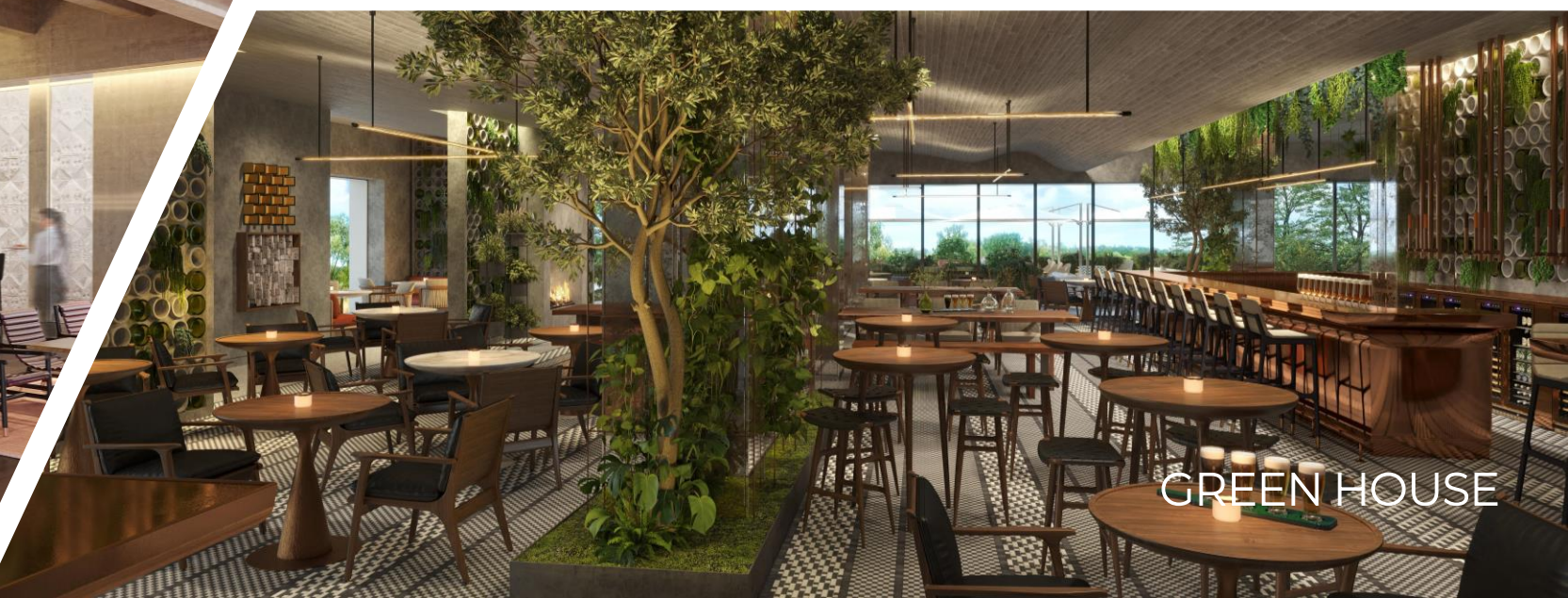
ZLATA PRAHA



TILIA CAFE



COOCOO`S NEST



GREEN HOUSE

FAIRMONT SPA

- ✓ UNPARALLELED 1400SQM = 15069 SQFT SPA AREA
- ✓ 5 TREATMENTS SUITES WITH DAYLIGHT AND PRIVATE PATIO
- ✓ FOUR SAUNAS AND STEAM BATHS
- ✓ HEATED INDOOR AND OUTDOOR POOL
- ✓ GROUP EXCERCISE STUDIO WITH LATEST TECHNOGYM EQUIPMENT
- ✓ 160 SQM = 1722 SQFT FITNESS STUDIO
- ✓ TILIA CAFÉ – HEALTHY FOOD FOCUS AND ACCESS TO A TERRACE





Outdoor & Indoor Pool

Terrace

Fitness Studio

Gym

Treatment suites

Tilia Cafe





SUSTAINABLE PROJECT

Coordination of progressive elements for a better climate in the city

Water harvesting

- Retention of rainwater and its use for irrigation.
- Utilization of a proportion of supply water from wells for operations that do not require potable water.
- Wastewater treatment and its secondary use for flushing ("grey water").
- Heat and cold source: water as a medium for heat pumps, including unique heat recovery from hotel operations.

Greenery

- 43 trees in public spaces in parks and alleys
- Over 500 m² of new park areas
- 2 177 m² of green roofs
- 210 m² of vertical gardens



Blue-green infrastructure

- A network of elements for modern cities to address urban and climate challenges.
- Includes water elements for rainwater harvesting or its purification.
- Together with green elements, it can, for example, reduce air pollution, save energy, improve microclimate or reduce overheating of the place.

Energy management

- Array of 30 geothermal boreholes with associated cascade of heat pumps.
- Cooling and heating works on the principle of recovering and recycling energy from internal sources such as geothermal boreholes on the hotel property, waste heat from the operation of the kitchens or air conditioning.



Fairmont
GOLDEN PRAQUE